

Note:

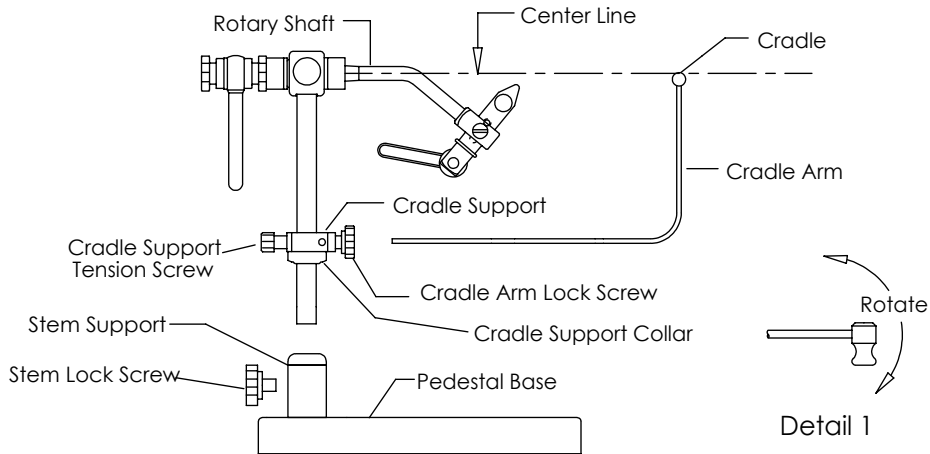
We urge you to take time to familiarize yourself with the mechanics of your Traveler vise. Rotary tying can be easier and more productive. See tips (opposite page). Please return your warranty card to validate your warranty.

C2303 Parts List

Item	Part No.	Description	Qty	Item	Part No.	Description	Qty
1	290-40843	C2300 End Cap (Traveller)	1	14	130-03038	Jaw Spring	1
2	120-01658	Nylon Flat Washer	2	15	110-00042	Jaw Adjusting Screw	1
3	290-40269	Traveller Crank Arm (Black)	1	16	120-01450	Jaw Mounting Screw	1
4	110-00005	Rotary Tension Screw	1	17	120-01147	Cradle Support Lock Screw	1
5	290-40838	C2300 Primary Knob	1	18	290-40258	Cradle Support (Black)	1
6	290-40271	Traveller Rotary Head Assy.	1	19	110-00003	Cradle Arm Lock Screw	1
7	220-22017	Rotary Shaft Right Hand	1	20	290-40308	Cradle Support Collar Assy. (Black)	1
7	220-22016	Rotary Shaft Left Hand		21	252-40158	Traveller Base Assembly	1
8	130-03016	Lube O-Ring	1	22	250-40020	7" Traveller Stem (Black)	1
9	130-03024	Ball Bearing	2	23	252-40186	Stem Lock Screw	1
10	290-40313	Traveller Cam Assy.	1	24	290-40264	Cradle Arm Assy.	1
11	130-03017	Jaw O-Ring	1	25	252-40180	Stem Support	1
12	290-40336	Primary Jaw	1	26	120-01149	Stem Support Lock Screw	1
13	290-40337	Secondary Jaw	Set				

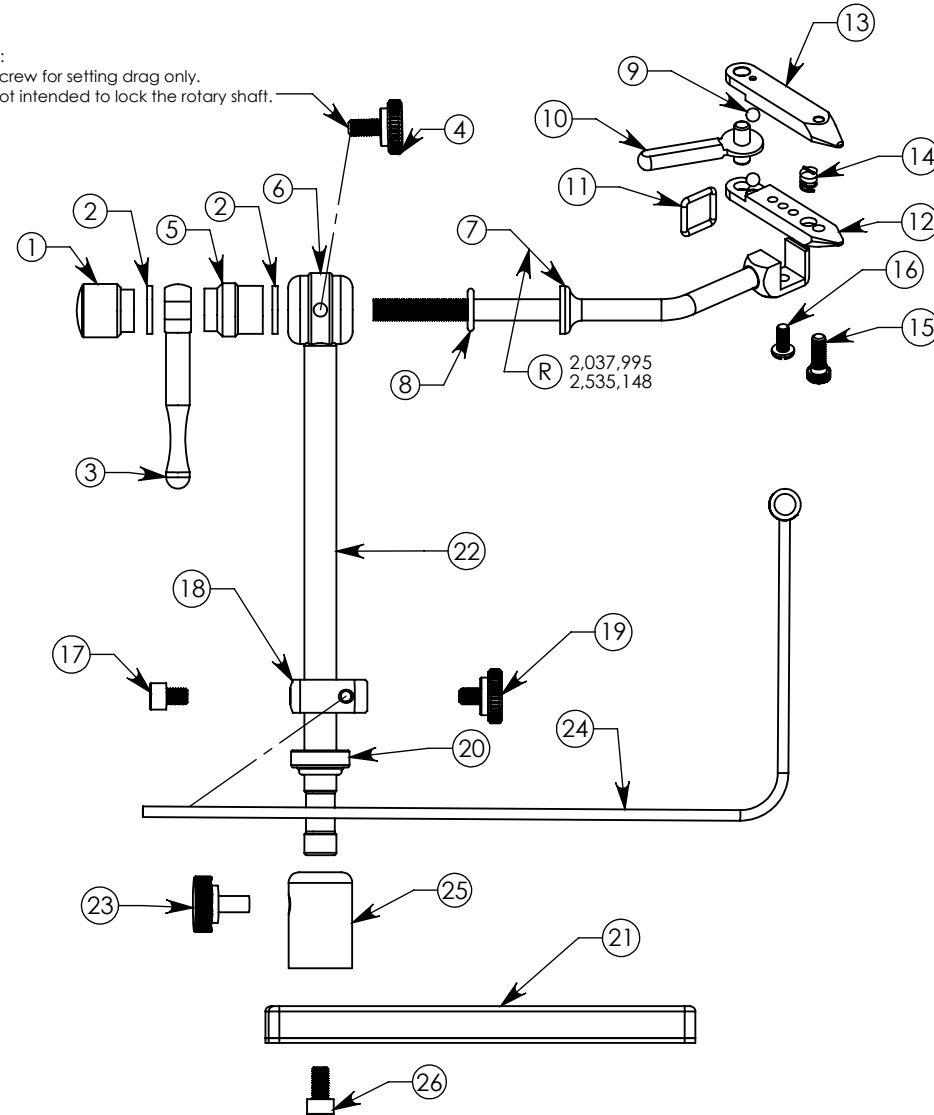
Vise Assembly

Your vise has been assembled and lubricated at the factory. All you have to do is assemble the bobbin cradle and attach the vise to the stem. The jaws on your vise have been black oxide coated and then oiled. After use they should be coated with oil or rust inhibitor such as WD-40 to prevent rust or oxidation caused by acidity in your fingers. Any light general purpose grease, preferably silicone grease, can be applied on any moving part or o-ring*. Please note, our warranty does not cover rust damage.



**Renzetti Traveler 2300 Series
True Rotary®
Model# C2303 Pedestal Base Vise**

Note:
This screw for setting drag only.
It is not intended to lock the rotary shaft.



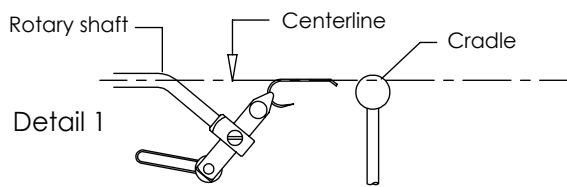
*Lubricate all threads and moving parts as needed

For the complete line of Renzetti products and accessories. Please visit our website:

www.renzetti.com or truerotary.com

Covered under U S Patent & Registration No.:
2,514,411; 2,077,565; 2,060,740; 2,567,674
2,535,148; 6,564,494B2; 2,037,995

Hook Placement In Jaw



1 The most important step of rotary tying is proper positioning of the hook in the jaw.

Always place the hook in the jaw so that the shank of the hook rotates on the center line of the rotary shaft as shown in detail 1.

2. As hook size increases be sure to place the hook deeper in the jaws as shown in detail 2 and detail 3.

3. Never try to hold the hook at the extreme tip of the jaw as shown in detail 4. This practice will cause premature failure of the jaw clamping faces.

Improper hook placement will damage jaws and voids warranty.

Setting The Jaw Gap

1. Start w/ cam handle in release position as shown in detail 5. (note: cam handle may need to be positioned further forward to allow for larger hook sizes.)

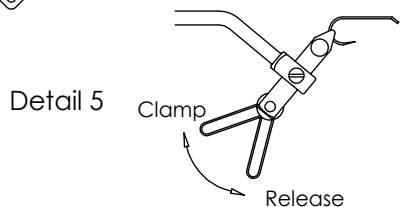
2. Use the jaw adjusting screw to adjust the gap until the desired hook just slips into the jaws. See detail 6.

3. To clamp the hook, swing the cam to the clamp position. See detail 5.

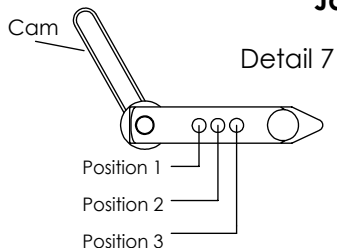
Note: If the cam does not come up to the clamp position, loosen the jaw adjusting screw a little and reclamp the hook. Repeat this procedure until the cam locks the hook in the correct position.

Note: There is no need to exert excessive force on the cam. Simply clamp the hook and test to see if it moves. If it does slip, readjust the jaw setting screw.

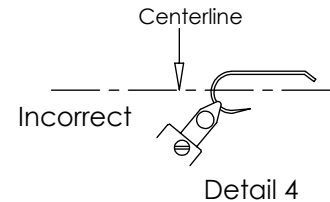
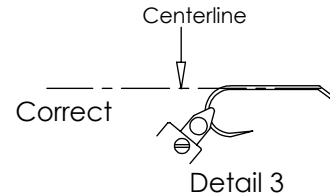
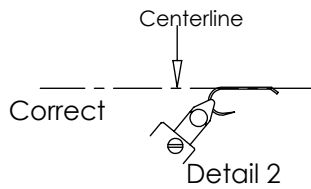
NOTE: Over clamping will cause damage to the jaws.



Jaw Adjustment



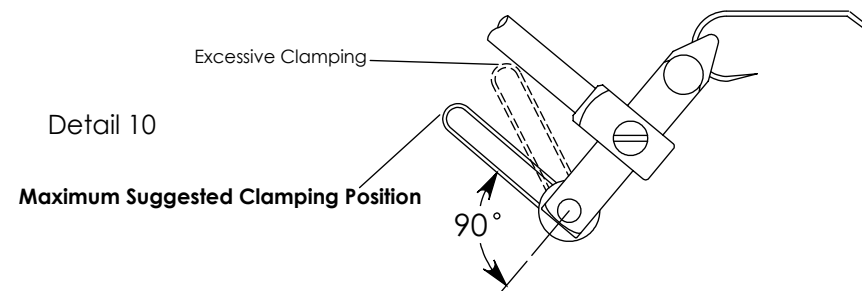
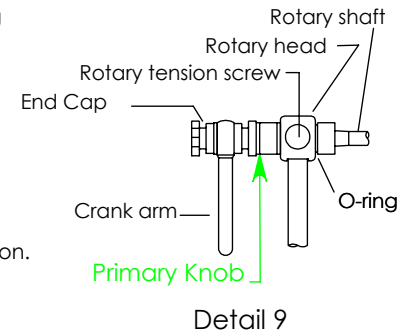
The jaws of your traveller vise can be moved to any one of three positions to accommodate hook sizes 28 to 4/0. Position 1 is for hooks 28-16, Position 2 is for hooks 16-2, Position 3 is for hooks 2-4/0. Refer to detail 7. To change positions remove the jaw mounting screw and slide the jaw to the desired position. Replace the jaw mounting screw and tighten. Refer to detail 8.



Rotary Tension Adjustment

If desired you can change the amount of drag against the rotary motion of your vise. refer to detail 9.

1. Hold the rotary shaft and the primary knob in one hand.
2. With the other hand loosen the end cap knob a little bit.
3. Either tighten the primary knob to increase tension or loosen the knob to decrease tension.
4. Again hold the rotary shaft and the primary knob in one hand and tighten the end cap
5. Use the rotary tension screw to add rotary tension or to stop rotation.



Tips on True Rotary Tying

- 1: When applying dubbing remember to use your rotary action, this allows you to always be in contact with the area you are wrapping.
2. The secret to palmering a hackle by rotary is the half hitch. After tying in the hackle, wrap your thread to the point at which you wish to stop the hackle. Then apply a half hitch. Hang the bobbin from the bobbin cradle. As the hackle is palmered the thread will roll with the hook. At the end of the palmer let your hackle pliers hang. Pick up the bobbin, swing the cradle out of the way and tie off the hackle.
3. Remember that a rotary vise makes all sides of your fly viewable by rotating the vise.

For more rotary tying techniques ask your retailer for the Renzetti rotary tying tips video.

For the complete line of Renzetti products and accessories. Please visit our website.

www.renzetti.com
or
www.truerotary.com